



BRICK - WORLD ZAMBIA LTD

COMPANY PROFILE 2024-2025

SERVICES

Roads and Drainages
Buildings and Housing
WASH Projects
General Civil Works
Maintenance and Rehabilitation



BRICK - WORLD ZAMBIA LIMITED
BRICK - WORLD ZAMBIA LIMITED
BRICK - WORLD ZAMBIA LIMITED

C O N T E N T S

Our background

Our vision/mission

Our values

Our objectives

Environmental sustainability commitment

Our services

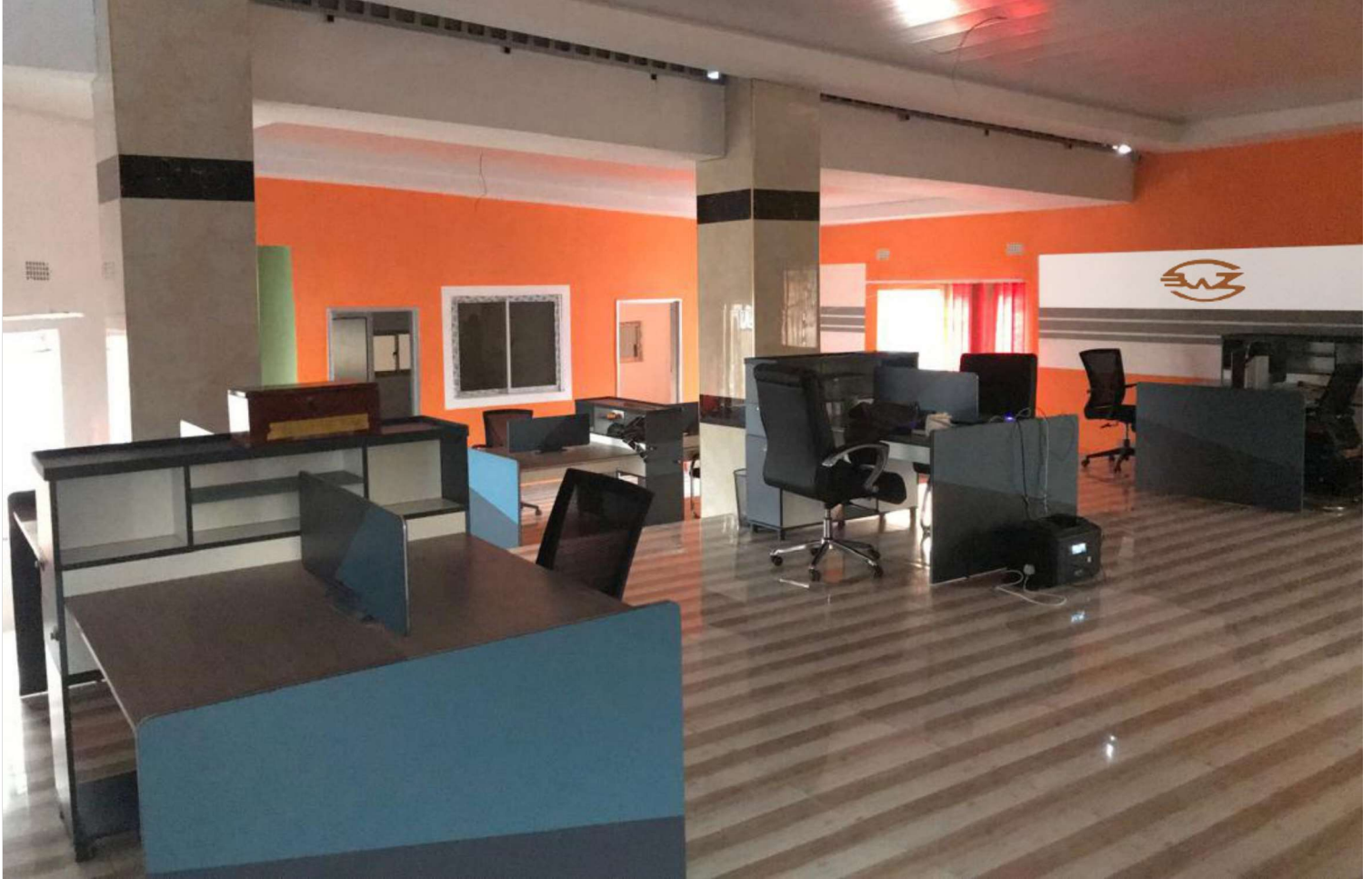
Target sectors

Organisational structure

Corporate social responsibility

Our clients

Our certificates



Our **Background**

Brick-World Zambia Limited is a well-established construction contracting firm that has been operating since 2007. With over 15 years of experience in the industry, the company has built an extensive network of business relationships both locally and internationally.

Brick-World Zambia is legally registered under the Companies Act 388 of the Laws of Zambia with the Patents and Companies Registration Agency (PACRA). It is also fully accredited by key regulatory bodies, including the National Council for Construction (NCC), Zambia Public Procurement Authority (ZPPA), and Zambia Development Agency (ZDA). Additionally, the company is a proud member of the Association for Building and Civil Engineering Contractors (ABCEC).

Specializing in a wide range of construction services, including greenfield and rehabilitation projects, Brick-World Zambia has successfully completed over 40 projects of varying scales across sectors such as water, sanitation, hygiene (WASH), road construction, and general building and civil works.

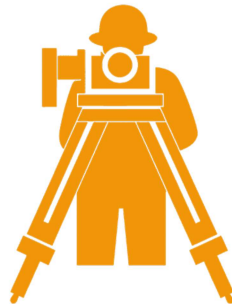
The company offers a comprehensive portfolio of services, from turn-key solutions to bid-and-construct projects. With a strong track record for delivering quality results, Brick-World Zambia is known for fostering long-term partnerships and repeat business with its diverse clientele.

Our **Vision**

To be a commercially successful, globally integrated business group that upholds the highest standards of moral, social, and environmental responsibility.

Our **Mission**

To pioneer innovative construction solutions



Our **Values**

Integrity

We uphold the highest ethical standards, fostering trust and transparency in all our interactions.

Safety

The well-being of our employees, clients, and the community is paramount. We adhere to the strictest safety standards to create a secure work environment

Collaboration

We believe in the power of collaboration, working closely with clients, partners, and stakeholders to achieve shared success.

Excellence

We strive for excellence in every aspect of our work, from project planning to execution, ensuring quality outcomes for our clients.

Innovation

We embrace technological advancements and innovative solutions to enhance efficiency, reduce environmental impact, and deliver superior results.



Our Objectives

The objectives of our company are grounded in a commitment to excellence, innovation, and client satisfaction.

Firstly, we aim to consistently deliver high-quality construction projects on time and within budget, ensuring that each project reflects our unwavering dedication to craftsmanship and precision.

Secondly, our focus extends to optimizing construction operations, striving to minimize costs and environmental impact while maximizing efficiency. We envision a workplace that fosters a culture of continuous improvement, achieved through ongoing employee training and development initiatives.

Expansion is a key objective, seeking to broaden our market presence regionally and globally, thereby fortifying our position as a trusted leader in the construction industry.

Finally, we are dedicated to responsible corporate citizenship, with a paramount goal of integrating sustainability into our practices, thereby contributing positively to the communities and environments in which we operate. These objectives collectively guide our daily operations, ensuring that Brick-world Zambia Ltd remains at the forefront of delivering superior and sustainable solutions for our clients.

Environmental Sustainability Commitment

Brick-world Zambia Ltd acknowledges the significant impact that construction activities can have on the environment. As responsible stewards of the planet, we are deeply committed to environmental sustainability. Our approach to sustainability is holistic, covering all aspects of our operations, from project conception to completion.

We integrate eco-friendly practices into our construction processes by utilizing sustainable materials, implementing energy-efficient designs, and adopting green construction methodologies. Through careful project planning and execution, we strive to minimize waste generation and reduce our carbon footprint. Our commitment to sustainable sourcing extends to partnering with suppliers who share our dedication to environmentally responsible practices.

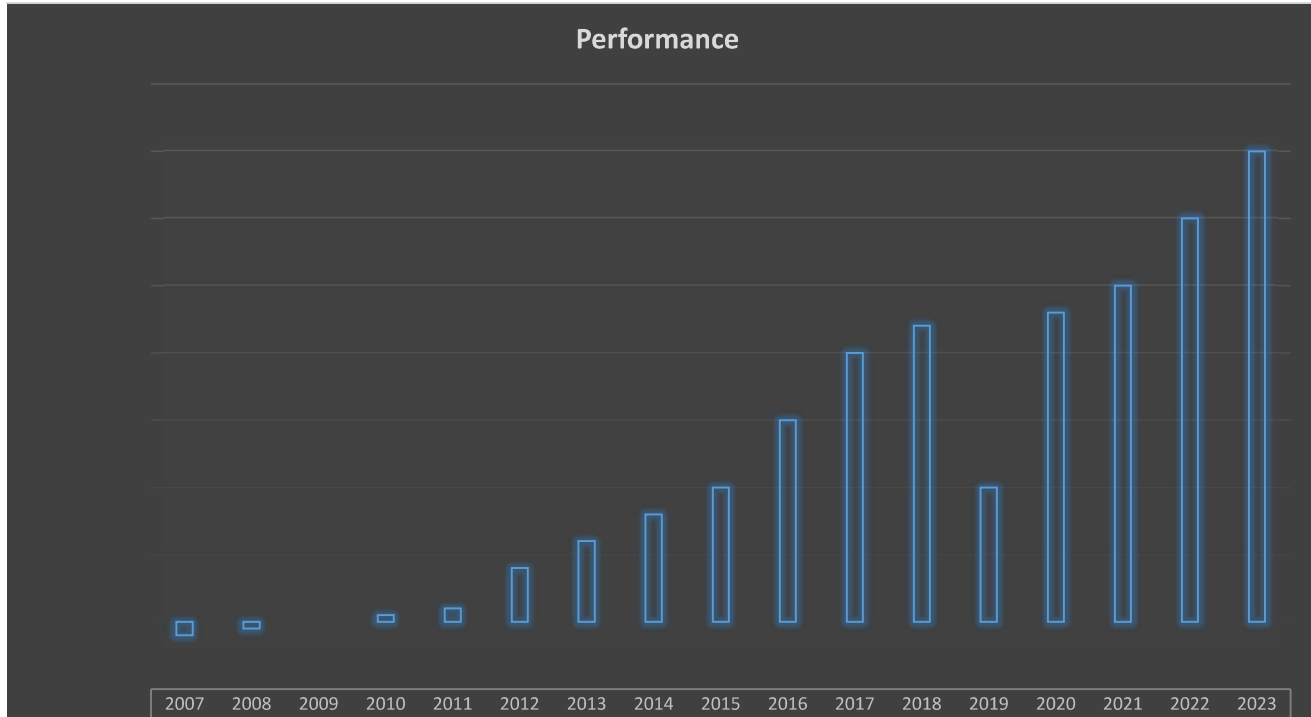
Brick-world Zambia Ltd actively seeks opportunities to incorporate renewable energy solutions into our projects, aiming to contribute positively to the global transition toward a more sustainable future. We prioritize water conservation, waste reduction, and the preservation of biodiversity in our construction practices.

Safety and Social Responsibility

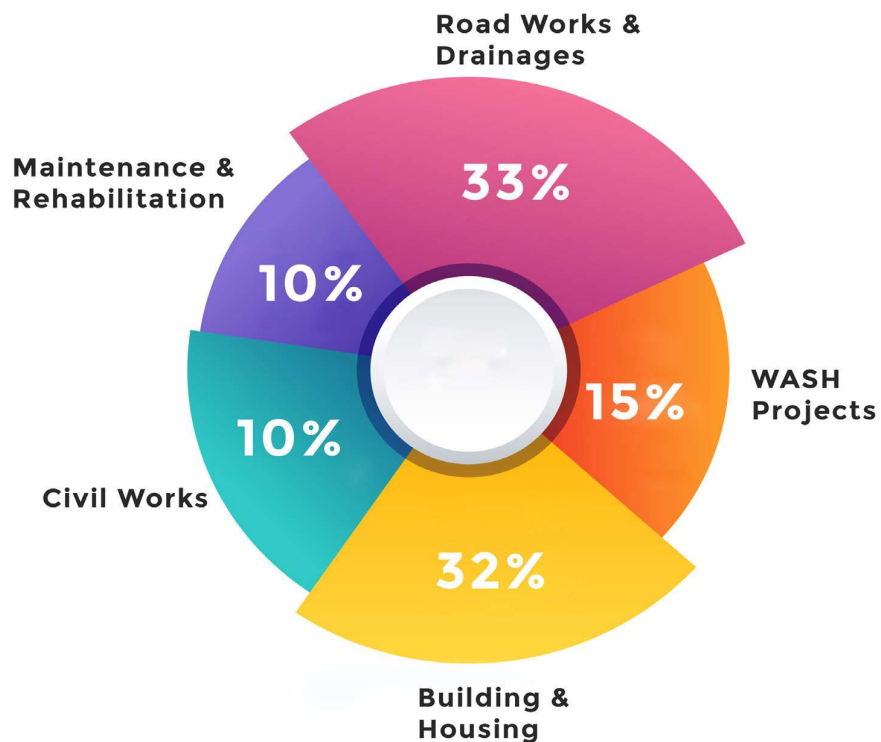
The well-being of our employees, clients, and the community is paramount. We adhere to the strictest safety standards to create a secure work environment.

Our Performance

The General performance of the Company shows continuous and sustained growth over the last fifteen (15) years, with exception of slump in 2019. The company is poised for greater projected growth of over 100% with expansion and diversification into other target sectors



Our Projects



Roads and Drainages:

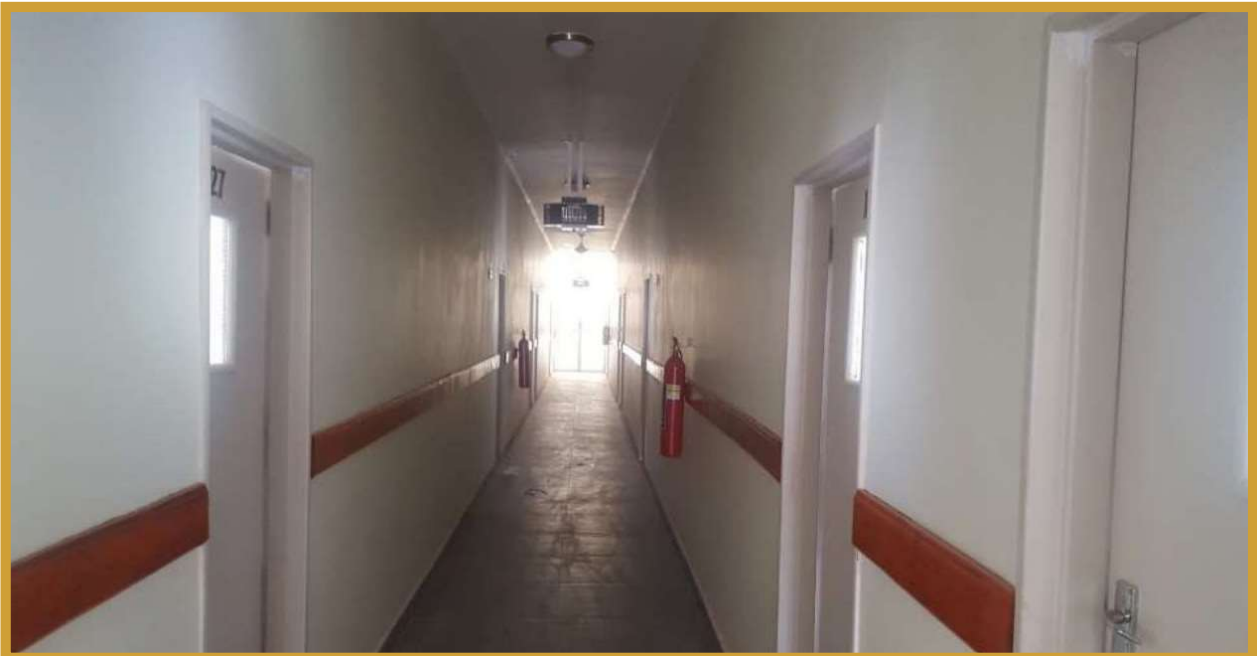
We specialize in the construction and rehabilitation of roads and drainage systems, providing durable, efficient infrastructure that improves connectivity and mitigates flooding risks. Our projects focus on enhancing road networks to meet the growing transportation needs while ensuring the sustainability of urban and rural drainage systems.



Our **Services**

Buildings and Housing:

Our expertise extends to the design and construction of residential, commercial, and institutional buildings. We deliver high-quality housing solutions and state-of-the-art facilities that cater to the needs of diverse clients, ensuring safety, functionality, and aesthetic appeal in every project.



WASH Projects:

We are committed to improving access to water, sanitation, and hygiene (WASH) services through the construction of reliable water supply systems, sanitation facilities, and wastewater treatment solutions. Our WASH projects are designed to promote public health and well-being, particularly in underserved communities.



General Civil Works:

Our civil engineering services encompass a broad range of infrastructure projects, from earthworks and foundations to bridges and public utilities. We deliver tailored solutions for complex engineering challenges, adhering to industry standards and ensuring the successful execution of each project.



Maintenance and Rehabilitation:

We provide comprehensive maintenance and rehabilitation services to extend the life and functionality of existing infrastructure. Whether it's road resurfacing, building renovations, or drainage repairs, we focus on cost-effective, sustainable solutions that restore and enhance the performance of vital assets.





Company **Details**

Contact line:

+260 977 542 476

Email:

brick-world@zambia.co.zm

Physical Address:

Plot F47a/B1/JJ, Kafue Road, Lusaka

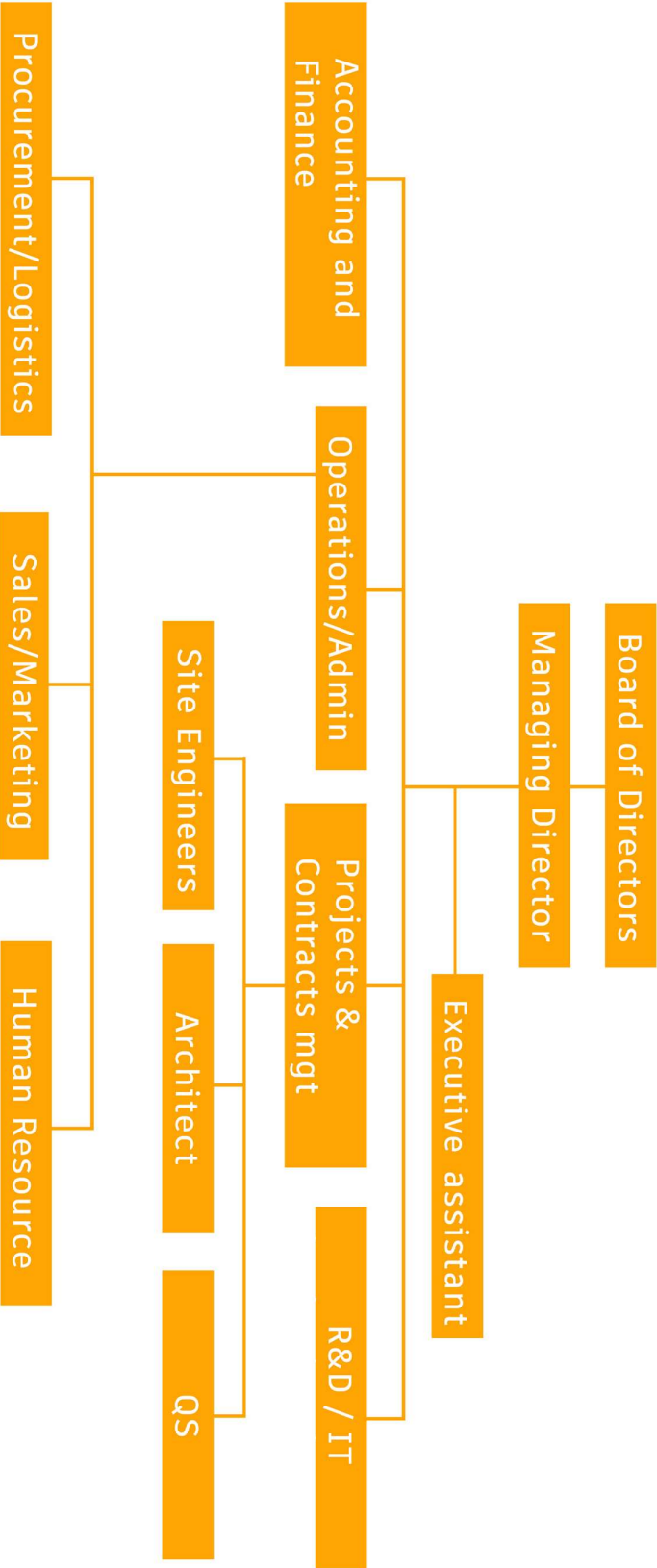
Postal Address:

P.O. box 39190

Facebook Page:

brick world zambia ltd

Organisational Structure



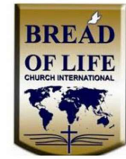


Corporate **Social Responsibility**

At Brick-World Zambia Limited, social responsibility is deeply embedded in our company culture. We believe in giving back to the communities where we operate and are committed to making a meaningful impact through various outreach initiatives. Our dedication to corporate social responsibility extends across multiple sectors, including education, healthcare, and infrastructure development. Through targeted donations, we support local schools, clinics, and community projects, aiming to uplift underserved areas and improve quality of life. We actively seek opportunities to contribute to sustainable development, fostering stronger communities and promoting social equity alongside our business operations.

“
Building Communities, Empowering
Lives
”

Our Local Clients



Our international clients

